



HOULTON
SCHOOL

SIXTH FORM
PROSPECTUS
2026/27

WELCOME TO HOULTON SCHOOL SIXTH FORM

The Sixth Form students who join us will be instrumental in the next steps of our journey in the school's development.

Post 16 study is an exciting time as it provides students with the chance to study their subjects of choice in depth, master independent learning and engage with the leadership and strategic direction of the school. We expect our students to challenge themselves to continually improve; to demonstrate excellence; courageousness and kindness in their actions. Our students will be supported so they can excel and will have access to tailored pastoral care to ensure that they reach their full potential.

We have the privilege of occupying a purpose-built Sixth Form provision which sits at the top of our Grade II Listed Transmission Hall. Sixth Form students have the advantage of further purpose-built areas around the school to support them in their independent learning, including Post 16 study spaces, work hubs and separate facilities for food and refreshment to complement the World Class facilities across our curriculum areas.

Wider curriculum opportunities are also extensive, allowing students to build skills for the future, developing their personal attributes and contributing to the wider community. Students will also have the opportunity to take on key roles in the school such as 'College Leader' and become part of our bespoke leadership programme.

Our personal development programme will ensure that students are nurtured as individuals, given advice and guidance on their future options. Whether applying through UCAS, to an apprenticeship provider, planning a gap year or going into the world of work directly, our team will ensure that each student is given detailed mentorship to help them achieve their aspirations.

We look forward to welcoming our first cohort and supporting them to help us shape and develop the culture and ethos of our Sixth Form provision. If at any point you have any questions or would like to visit us for an informal chat, please do not hesitate to get in touch.

“ We look forward to welcoming our first cohort and supporting them to help us shape and develop the culture and ethos of our Sixth Form provision. ”

PROUD TO BE PART OF THE TRANSFORMING LIVES EDUCATIONAL TRUST

At The Transforming Lives Educational Trust (TLET), our core purpose is to transform tomorrow, today.

This means that we believe in transforming the life chances of others so that they, in turn, become the transformers of the future, bringing about positive change and making a difference long into adulthood. Transform tomorrow, today is why we do what we do.

Our ambitions of nurture potential, inspire community, and deliver excellence are at the heart of how we transform tomorrow, today. They are the golden threads that unite our Trust family and everything we do is rooted in them.

We are proud to work in partnership with the other schools within the TLET family - Ashlawn School and Henry Hinde School.



CARE AND SUPPORT

We are here to help you as you make the transition into Sixth Form life, and have a dedicated team of staff to support you throughout your studies.

Through tailored pastoral and wellbeing support we ensure Sixth Form students reach their full potential. We understand and care about students' needs and will encourage you to believe in yourself and have the highest possible aspirations.

This includes a focus on getting the best from the courses you have chosen, being there for you in times of challenge, as well as nurturing your wider talents and co-curricular interests.

There will also be an emphasis on preparing you for your next steps - be that university, higher level apprenticeships or employment.

Rest assured that at Houlton you will be part of a welcoming family, here for you throughout your time with us and beyond.



THE SUPER CURRICULUM AND ENRICHMENT



All students in Sixth Form will study either three or four Level 3 subjects of choice and in addition will take part in at least one Super Curriculum and enrichment activity.

This enables students to gain a well-rounded and broad skill set as well as banking extra academic 'currency' and UCAS points. Super Curriculum and enrichment opportunities will be taught over five periods per fortnight, alongside opportunities for sport, leisure and well-being activities.

LEVEL 3 EXTENDED PROJECT (EPQ)

EPQ offers students the opportunity to develop higher level skills in both research and essay writing, sought after by both universities and employers alike. The project title is at the discretion of the individual student and allows for the pursuit of a personal area of interest or subject specialism relevant to future career choices or study. The final project can take the form of either a 5000 word essay or, an artefact supported by a 1500 synopsis and is submitted either in Year 12 or 13 alongside a formal presentation. Once completed the EPQ is worth a maximum of 28 UCAS points and is highly regarded by admissions tutors. Some universities will give more favourable offers to those with a relevant EPQ.

CORE MATHS

This course will help you develop your understanding of mathematical concepts and will be advantageous if studying a degree with some mathematical and statistical methods required. It is useful for discovering real-life applications of mathematical concepts and will bolster confidence in using numeracy skills in later life. You will develop skills in problem solving, using and applying Mathematics in non-mathematical contexts, as well as learn to devise strategies to solving problems where the method is not obvious. You will also be developing skills such as estimating appropriately to enable you to make reasoned arguments.

EXTENDED COMMUNITY SERVICE UNIT (CSU)

All Year 12 students will be required to commit to a minimum of 1 hour of Community Service per week as part of our enrichment 'character' curriculum. Students however can opt to take the Extended CSU which will require an additional 5 hours across the fortnight. Completing the Extended CSU will enable students to potentially obtain a nationally recognised award in community service and volunteering.



GOLD DUKE OF EDINBURGH AWARD

The Gold Duke of Edinburgh award is highly coveted by universities and employers alike. The Gold Award gives students the opportunity to develop their team building, communication and resilience skills. It requires commitment and dedication and demonstrates that students are able to think independently and is nationally recognised. The Gold Duke of Edinburgh gives students a plethora of opportunity to develop 'soft skills' which are key for employability and also to focus on an area of interest.



ENRICHMENT

'PERIOD SIX' CURRICULUM DEVELOPMENT

As part of our Super Curriculum pupils will have the opportunity to engage in lectures and industry talks from a wide range of professionals who will be joining us to support our students in both subject material and in careers education and guidance. This is an integral part of the curriculum to support all students in the development of independent thinking; and to provide additional depth to their subject knowledge and understanding. As part of this provision students will have the opportunity to join the Law Society, the Medical Society and also to be involved in the Post 18 Oxbridge application group where all students planning to apply for competitive courses will be supported to make successful applications.

LEADERSHIP

Leadership and Student Fora will continue to be an integral part of the Houlton School offer through all phases where students can obtain nationally recognised accreditation for their leadership. All students will have the opportunity to work with pupils across both the primary and secondary phase alongside volunteering opportunities externally. Inclusive leadership is important to us; students will be able to be a part of the development and strategic shaping of our school. By becoming a College Leader or as part of the wider Student Leadership Team, Sixth Form students can take ownership and responsibility for elements of the personal development curriculum across a college.

CO-CURRICULUM, TRIPS AND VISITS

Sixth Form students will all be involved in our outstanding co-curricular programme which gives students access to a huge range of clubs and activities both at lunchtime and after school. We also encourage every individual to be involved in activities outside of the curriculum, such as, fundraisers, debating, sports, music and social committees; all designed to allow our students to flourish in their areas of excellence and to develop new skills. Houlton School is committed to the wider curriculum and there will be several overseas and more local trips and visits ranging from subject specialist trips, conferences, galleries and more. We plan to travel to the USA, Africa and Europe.

We also like to have some fun in Sixth Form! We will be offering various rewards trips to celebrate and recognise the hard work of our students. As part of our curriculum, Year 13 will have the opportunity to attend our annual curriculum Study Conference where they will work with our A Level teaching staff on revision techniques and undergraduate level study skills. As part of this experience students will have the opportunity to take part in a number of outdoor pursuits and team building activities to support not just the academic preparation required for A Level examinations but also to ensure pupils well-being and mental health is supported through the rigour of Post 16 study.



WELL-BEING, SUPPORT AND SAFEGUARDING

Our experienced Sixth Form team will be there to support our students every step of the way. Students will be heavily involved in shaping the Post 16 well-being charter to ensure that our school values of acceptance and inclusion run throughout our Sixth Form. Our Sixth Form Pastoral Team, and the Inclusion Faculty will be there to provide individualised support. Houlton School has a skilled team of Mental Health First

Aiders across the school, to ensure tailored support is available to support students' mental health and well-being. Sixth Form students will have a rich PHRSE curriculum taught by specialists which has been specifically designed to support pupils in 'steps into adulthood' and through their Post 18 choices to ensure that when students leave us, they are well equipped and ready for their next steps.



BOARD: AQA

A-Level Fine Art offers students an exciting opportunity to explore and develop their creative skills in a supportive and challenging environment. The course encourages personal expression through a wide range of techniques, including drawing, painting, printmaking, and mixed media. Students will build a diverse portfolio while studying the work of influential artists to inform their own practice. Our ultimate goal is to develop creative forward thinking learners.

Students will learn to critically analyse the work of artists, develop their own visual language, and produce ambitious and meaningful outcomes. With a strong emphasis on independent thinking and experimentation, Fine Art at A-Level provides an excellent foundation for students with a passion for art and design and provides a strong foundation for further study in creative fields or careers in the visual arts.



BOARD: EDEXCEL

A Level Business offers students a dynamic and engaging insight into how businesses operate, make decisions, and adapt to an ever-changing global environment. This comprehensive course is designed to develop students' understanding of core business concepts while encouraging them to think critically and strategically about real-world business issues.

The course is structured around four key themes:

- **Theme 1: Marketing and People** – Students explore how businesses identify and meet customer needs, the role of marketing in driving success, and how to manage people effectively through motivation, leadership, and organisational structures.
- **Theme 2: Managing Business Activities** – This theme introduces key operational and financial aspects of business, including how firms raise finance, plan financially, and manage resources to operate efficiently.

- **Theme 3: Business Decisions and Strategy** – Students delve deeper into the strategic side of business, learning how to interpret performance data, assess the competitive environment, and make informed decisions that drive long-term success.
- **Theme 4: Global Business** – The final theme investigates international trade, global markets, and the opportunities and challenges businesses face when expanding overseas.

Assessment is through three externally examined papers. **Paper 1** focuses on Marketing, People, and Global Business (Themes 1 and 4), **Paper 2** covers Business Activities, Decisions, and Strategy (Themes 2 and 3), and **Paper 3** requires students to apply their knowledge to a pre-released business context, demonstrating their ability to think critically and respond to real-world scenarios.

Throughout the course, students develop a range of valuable skills including analysis, evaluation, strategic thinking, and decision-making. They learn to interpret data, assess different business strategies, and justify their recommendations using evidence. Real-life case studies are used extensively to help students apply their knowledge in context and understand how businesses respond to challenges and seize opportunities.

Whether students are interested in studying business at university or entering the world of work, A Level Business provides a solid foundation for a wide range of future pathways, including management, finance, marketing, entrepreneurship, and international business. It is a course that not only builds academic ability but also prepares students for the practical realities of working in and understanding today's business world.

A LEVEL BIOLOGY

BOARD: OCR

Put simply, Biology is the scientific study of life, encompassing the investigation of living organisms and life processes from the molecular level, through cells and individual organisms, to populations and entire communities of animals and plants. The A-Level Biology course invites you to explore this vast and intricate subject, developing a deep understanding of scientific ideas, processes, techniques, and procedures. You will learn to apply this knowledge in both theoretical and practical contexts, skilfully handling qualitative and quantitative data. A significant part of the course involves analysing, interpreting, and evaluating scientific information, ideas, and evidence to make sound judgements and reach well-supported conclusions. Furthermore, you'll have ample opportunities to develop and refine practical design and procedures, honing essential laboratory skills. While there is no coursework or controlled assessments, practical skills are rigorously developed throughout the course to prepare for the written examinations.



The A-Level Biology assessment consists of three exams, totalling six hours, with 10% of the marks within these written examinations dedicated to the assessment of Mathematics. This 100% externally assessed qualification provides an excellent foundation for progression to undergraduate study in a wide range of fields, including medicine, veterinary science, environmental science, biotechnology, and various research and healthcare professions, preparing you for a future dedicated to understanding and improving life.

A LEVEL CHEMISTRY

BOARD: OCR

Often called 'the central science,' Chemistry is a vibrant and exciting subject fundamental to understanding the world around us. Its applications are far-reaching, from creating new materials and understanding complex biological systems to ensuring the quality of our food, medicines, water, and air. The A-Level Chemistry course will significantly develop your knowledge and understanding of scientific ideas, processes, techniques, and procedures. You will learn to apply this knowledge in both theoretical and practical contexts, becoming proficient in handling qualitative and quantitative data. A core component of the course involves analysing, interpreting, and

evaluating scientific information, ideas, and evidence to make informed judgements and draw accurate conclusions. You will also have the opportunity to develop and refine your practical design and procedures, ensuring a robust skill set for scientific inquiry.

The assessment for A Level Chemistry is 100% externally assessed through three exams, totalling six hours. A significant 20% of the marks available within these written examinations will be for the assessment of Mathematics, highlighting the quantitative nature of the subject. While there is no coursework or controlled assessments, a strong emphasis is placed on developing

a wide range of practical skills throughout the course, which are crucial for success in the written examinations. This rigorous qualification thoroughly prepares you for undergraduate study and diverse careers in the chemical, pharmaceutical, materials, food and drink, utility, healthcare, aerospace, automotive, information technology, and telecommunications industries.

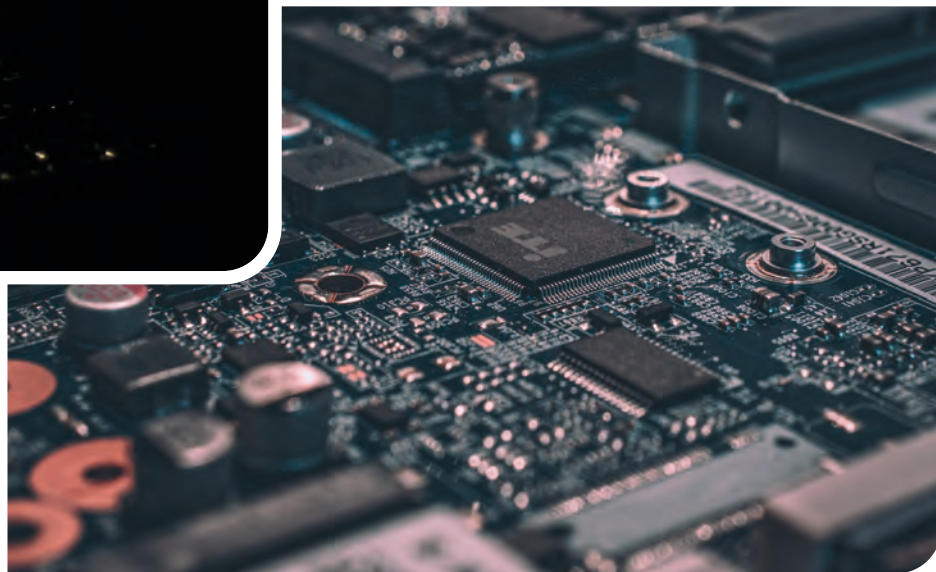


A LEVEL COMPUTER SCIENCE

BOARD: OCR

OCR A-Level Computer Science is a dynamic, future-facing subject that gives students the opportunity to explore how technology works and how it shapes the world we live in. This course equips learners with both theoretical knowledge and programming skills, developing a deep understanding of computational thinking, systems architecture, algorithms as well as computer components, Software, Data types and exchange and legal, moral, cultural and ethical issues.

Students are assessed through a combination of examinations and a substantial programming project; as part of this they will gain proficiency in coding with high-level programming languages such as Python, where students will learn to design, implement and text complex solutions to real world problems. Students will be immersed in independent programming coursework projects, where they will be tasked with creating a fully functional software solution from scratch thereby combining and applying their theoretical knowledge with principles of project planning, design, development and evaluation. This project gives students the perfect opportunity to explore a personal interest in computing or to develop a technical solution to a real problem. Students are supported through regular feedback, practical challenges and enrichment opportunities.



By the end of the qualification, students will have developed a strong foundation in both the theoretical and practical aspects of computer science, preparing them for further study in computing, software engineering, artificial intelligence or data science. The analytical and technical skills gained are also highly valued in a wide range of industries such as finance, engineering, cybersecurity and digital technology.

This course is ideal for students who enjoy problem solving, are curious about how technology works and want to develop skills to shape the digital world of the future.

A LEVEL ENGLISH LITERATURE

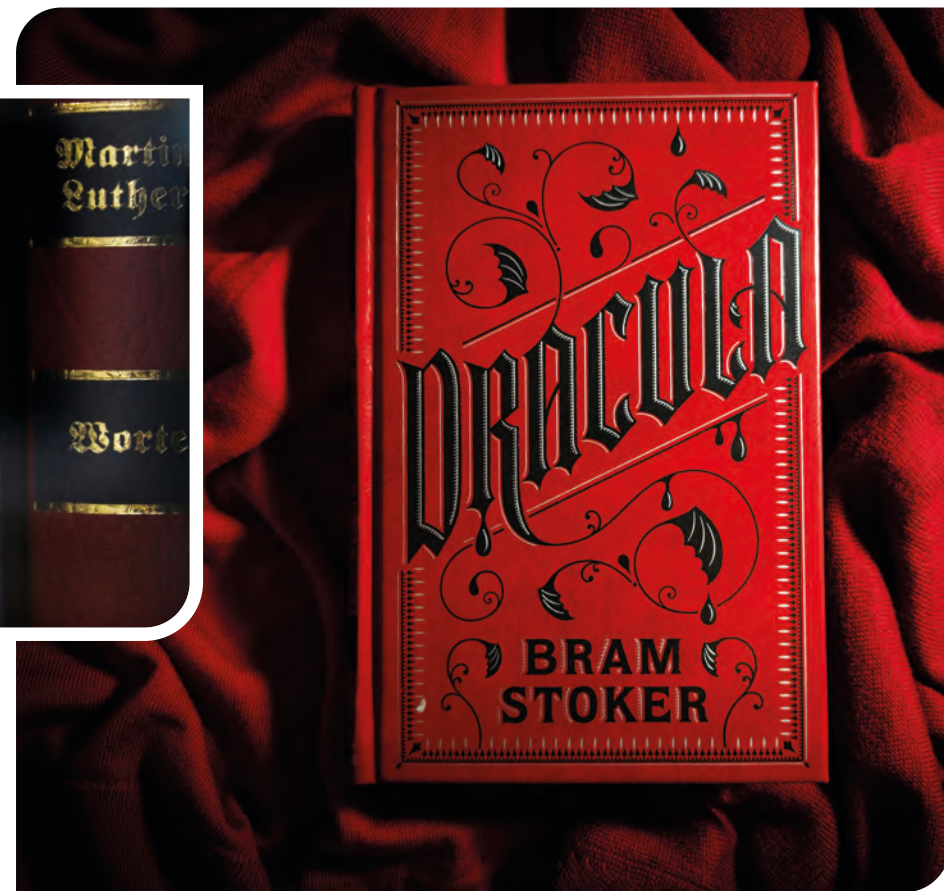
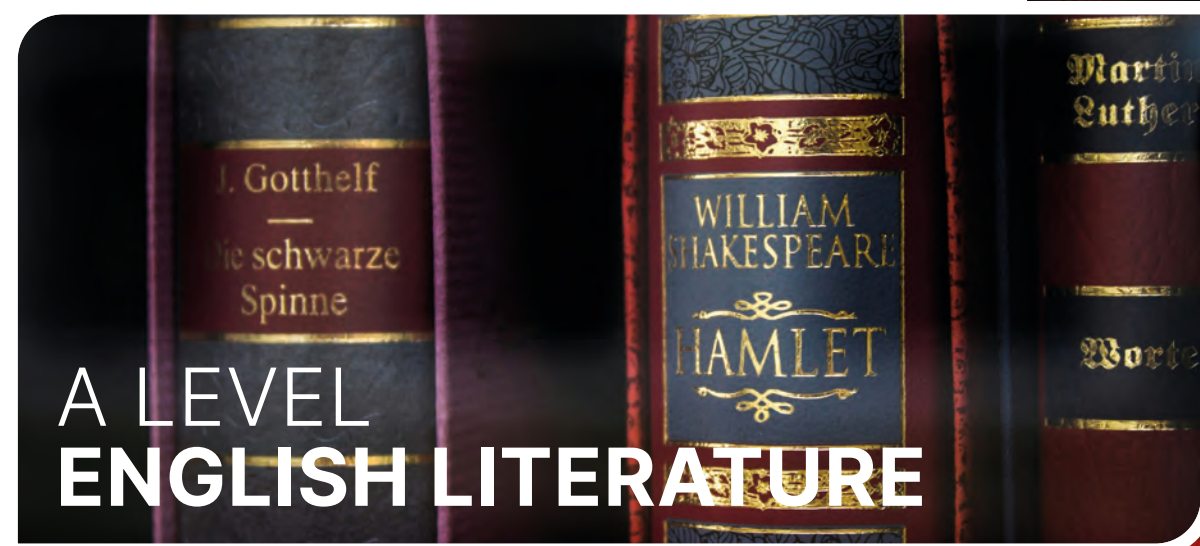
BOARD: OCR

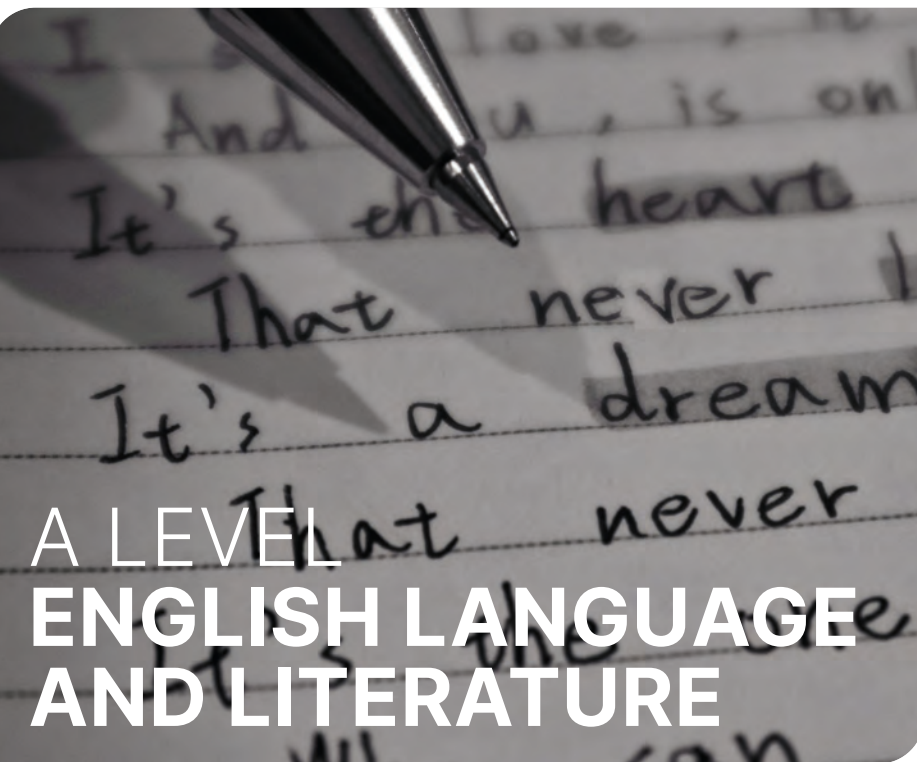
In the English Department at Houlton School, we enable our A-Level Literature students to build on the skills and knowledge acquired at GCSE and become independent, lifelong learners with enquiring minds. By exposing our students to a range of fiction and non-fiction texts across genres, authors and time periods, we aim to build sophisticated analytical skills in our students and give them the confidence to use literary and linguistic terminology effectively and accurately. We will give our students the research skills to investigate a breadth of contexts, historical periods and critics' views in order to enable them to show intelligent interpretation, inference and reasoning.

Students are encouraged to form and express personal opinions and enhance points from others with sensitivity. Students are finally armed with the resilience, written structure and critical vocabulary with which to succeed in a series of extended examination and non-examination assessment essays.

OCR have created a rigorous, stimulating and challenging A-Level English Literature course which allows some freedom of textual choice and includes elements of independent

study. For our set texts, the current plan is to study, among others, the works of William Shakespeare, Henrik Ibsen, Christina Rossetti, Angela Carter and Bram Stoker. This is open to change. A-Level students are required to explore contrasts, connections and comparisons between different literary texts. The freedom within the non-exam assessment component allows learners to pursue more detailed work in a field of particular personal interest, offering excellent preparation for study at undergraduate level.





A LEVEL ENGLISH LANGUAGE AND LITERATURE

BOARD: OCR

In the English Department at Houlton, we enable our A-Level Language and Literature students to build on the skills and knowledge acquired at GCSE and become independent, lifelong learners with enquiring minds. By exposing our students to a range of fiction and non-fiction texts across genres, authors and time periods, we aim to build sophisticated analytical skills in our students and give them the confidence to use literary and linguistic terminology effectively and accurately. We will give our students the research skills to investigate a breadth of contexts, historical periods and critics' views in order to enable them to show intelligent interpretation, inference and reasoning.



Written skills are further developed from GCSE along with oracy. Students are encouraged to form and express personal opinions and enhance points from others with sensitivity. Students are finally armed with the resilience, written structure and critical vocabulary with which to succeed in a series of analytical and creative tasks in examinations and non-examination assessments.

OCR have created a rigorous, stimulating and challenging A-Level English Language and Literature course which allows some freedom of textual choice and includes elements of independent study. Students will study poetry, prose and drama but also anthology of twenty spoken and written non-fiction texts from different time periods, types of text and contexts. For their coursework, students will also pursue a particular interest and develop their expertise through an analytical comparative essay and an original non-fiction writing piece.



BOARD: WJEC

Food Science and Nutrition is an exciting subject that is suitable for any student who is interested in Food; from how it is produced, to how it affects our health, medical conditions linked to diet and how food can be prepared safely and skilfully. Food is such a fast-paced industry with job roles such as manufacturing, product design, food stylist, food journalism, health promotion, dietitian/nutritionist, sports coaching. It is not just about becoming a Chef. The avenues are limitless!

The course is 50% coursework broken up into 4 units of work.

Unit 1: Mandatory: 'Meeting Nutritional Needs of Specific Groups' Internal coursework + External examination.

Unit 2: Mandatory: 'Ensuring Food is Safe to Eat' - External examination.

Either Unit 3 or Unit 4 must be selected: Unit 3: Optional: 'Experimenting to Solve Food Production Problems' -Internal Coursework or Unit 4 Optional: 'Current Issues in Food Science and Nutrition' - Internal Coursework.

Pupils will develop independent learning and skills which will be transferable in problem solving, budgeting, application of mathematical and ICT skills. They will be able to learn in a vocational context too. This qualification has been designed to offer interesting experiences that focuses on applied learning, i.e. through the acquisition of knowledge and understanding in purposeful, work-related



contexts, linked to the food production industry. Learners will gain the required knowledge to be able to use the qualification to support entry to higher education courses.

A LEVEL FRENCH

BOARD: AQA

Step into the rich and dynamic world of French-speaking culture with A Level French. More than just a language course, this is your opportunity to engage critically with global issues, cultural perspectives and current affairs – all through the lens of the Francophone world.

Over two years, you will explore a wide range of thought-provoking themes: from the challenges and celebrations of modern society to political engagement, immigration, and multiculturalism. You will study **French cinema and literature**, deepening not only your linguistic skills but also your ability to analyse, interpret and reflect on ideas with confidence and nuance.

Through regular discussion, research and debate, you will sharpen your critical thinking – building arguments, weighing up perspectives, and responding to complex ideas in both written and spoken French. Your independence as a learner will grow, especially during your **Independent Research Project** (IRP), where you will investigate a topic of personal interest connected to the French-speaking world.

French at A Level is a gateway to other ways of life, unlocking careers in international relations, journalism, law, business, and beyond.



This course will develop your resilience, adaptability and help you build a truly global mindset.

In an increasingly interconnected world, A Level French is a liberation from insularity – it invites you to look outward, think differently, and communicate across borders.

A LEVEL GEOGRAPHY

BOARD: AQA

Geography at A Level is the study of dynamic interactions: between people and places, societies and systems, and the natural and built environments that surround us. At Houlton School, you will follow the AQA specification, which challenges you to think critically about the challenges facing our world and the choices we must make in response. Our enquiry-led approach encourages curiosity, debate, and the development of your own well-informed perspectives. You will explore the physical and human worlds both separately and in connection with one another—studying topics that range from the hazards posed by tectonic activity to the impacts of global governance and population change.

In your physical geography component, you will study Water and Carbon Cycles—two fundamental systems that underpin life on Earth—as well as Coastal Systems and Landscapes and Hazards. These areas will help you understand the complexity of natural processes and how they are increasingly influenced by human activity. In human geography, you will examine topics such as Changing Places and Global Systems and Governance, developing insight into how identity, inequality, and power are shaped and reshaped across different spaces and scales.

Geography is also a subject grounded in evidence. Through your Independent Investigation (NEA), you will have the opportunity to conduct a fieldwork-based enquiry into a topic of your choosing, drawing

on primary data collection and advanced analytical techniques. Whether investigating urban regeneration, coastal management, or social inequality, you will develop practical research skills that are highly valued by universities and employers alike.

This course will help you to interrogate the world around you—not just to describe what you see, but to ask why it is happening, who it affects, and how we might respond. Geography is a subject for those who are fascinated by real-world issues and eager to engage critically with global and local challenges. At A Level, it becomes not just a study of the Earth, but a study of how we live upon it.



BOARD: AQA

Studying A Level German opens the door to a rich world of language, culture, and opportunity. Following the AQA syllabus, this course goes far beyond vocabulary lists and verb tables – it offers a deep and engaging exploration of German-speaking society, past and present.

You'll examine current trends such as the changing role of the family and the impact of digital technology, alongside issues and challenges like immigration and cultural identity. The course also covers aspects of German history, particularly the period of post-reunification and how Germany's past continues to shape its national identity today.

As part of your studies, you'll analyse a German film and a literary text, giving you the chance to experience the language through powerful storytelling and artistic expression. These works will not only build your confidence in using German, but also develop your skills in interpretation, argument, and critical thinking.

Speaking and writing with fluency and spontaneity are at the heart of the course. Through regular conversation practice, debates, and structured writing tasks, you'll become a confident communicator, equipped with valuable, transferable skills for university and the workplace, preparing you for real-life communication and professional contexts.

Whether you aim to study languages further, pursue a career in international business or politics, or simply want to understand and engage with another culture, A-Level German offers you the skills, insights and confidence to engage with the world.

Challenge yourself. See the world differently. Prepare for your future.
Vorsprung durch Deutsch.



BOARD: OCR

A level History students become critical thinkers, confident communicators, and well-rounded global citizens — equipped to understand complex issues and engage thoughtfully with the world around them.

We follow the OCR specification, offering a rich and diverse curriculum. In **Year 12**, students begin with Britain 1930–1997, exploring a period of immense political, economic, and

social change. From the Great Depression to the rise of Thatcherism, students examine how Britain responded to crisis and transformation. A focused case study on **Winston Churchill** allows for deeper exploration of leadership, legacy, and public memory.

Later in Year 12, students study African Kingdoms c.1400–1800, a unique and globally focused unit that challenges Eurocentric narratives. Students examine four sophisticated and influential African states: **Kongo, Benin,**

Oyo, and Songhay. Through the study of governance, trade, religion, and diplomacy, this unit highlights Africa's rich and diverse historical contributions.

In **Year 13**, students tackle the depth study Russia and its Rulers, 1855–1964. Covering over a century of dramatic upheaval — from Tsarist autocracy to Soviet dictatorship — students explore themes of authority, ideology, resistance, and reform. The course encourages comparisons between rulers and regimes, deepening students' understanding of political power and historical continuity and change.

Alongside these units, students complete a **coursework project** — a 3000–4000 word independent essay on a historical topic of their choice. This personal research task builds university-level skills in analysis, interpretation, and argument.

OCR A-Level History is the perfect choice for intellectually curious students who want to explore diverse global narratives, develop powerful academic skills, and gain a deeper understanding of how the past shapes the present.



A LEVEL LAW

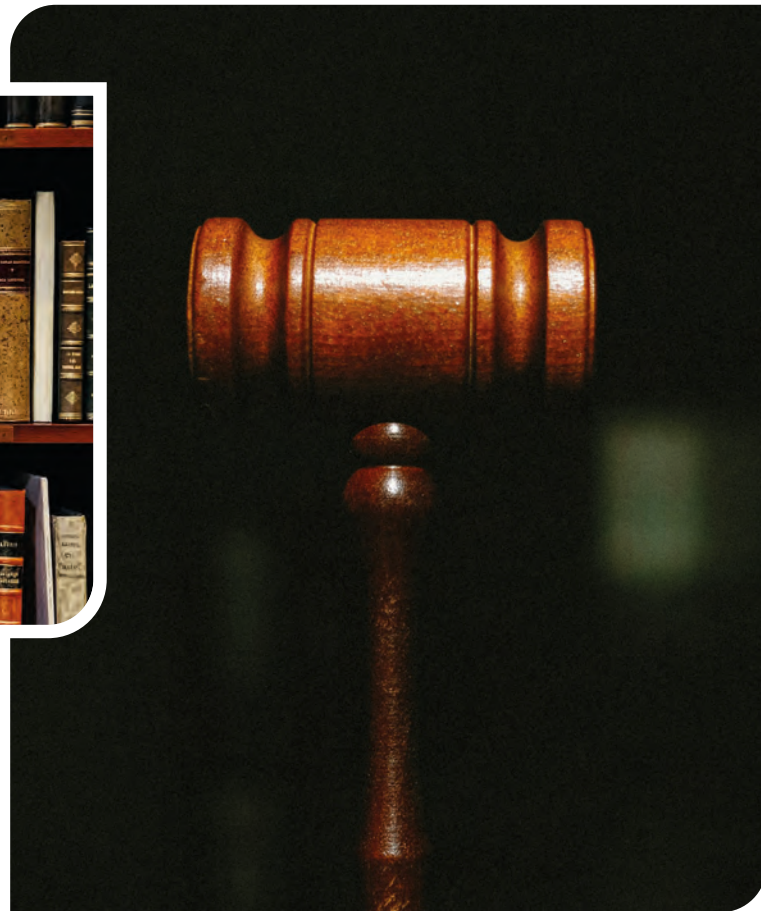
BOARD: AQA

Studying A Level Law give students a deep understanding of the various facets of the justice system. Students will learn how the elements of British law work in practice and the theories behind them and will study legal cases in depth which are integral to the development of our legal structures. The course requires students to study and be able to apply statutes and procedures in order to solve problems and to increase their knowledge of the legal process and how parliament operates. Students will have the opportunity to critically assess the impact of 'law' on individuals' rights and liberties through active discussion and debate.

Students will develop knowledge and understanding of the processes of the legal system, people involved in the law and the

changing nature of the legal system. Topics include civil and criminal courts, the legal professions and access to justice and criminal law including the detail of different offences and defences. Students will study law making methods within England and Wales and their underpinning concepts, developing an understanding of legal method and reasoning as used by lawyers and the judiciary and will also develop your understanding of the law of tort, for example liability in negligence, occupiers' liability and remedies.

The synoptic elements of the specification will explore how the law interacts with society, morality and justice which includes the law surrounding human rights including their nature, protection and constitutional position under UK



law. Specific rights and restrictions are explored in detail and the process of enforcement through the courts.

As part of skill development students will have the opportunity to take part in debating and 'Mooting' both in lessons and externally through local and national competitions.

A Level Law is a superb qualification, assesses through 100% examination. It is especially useful for those looking to go into Law, Business, Finance, Politics or International Studies.



A LEVEL MATHEMATICS

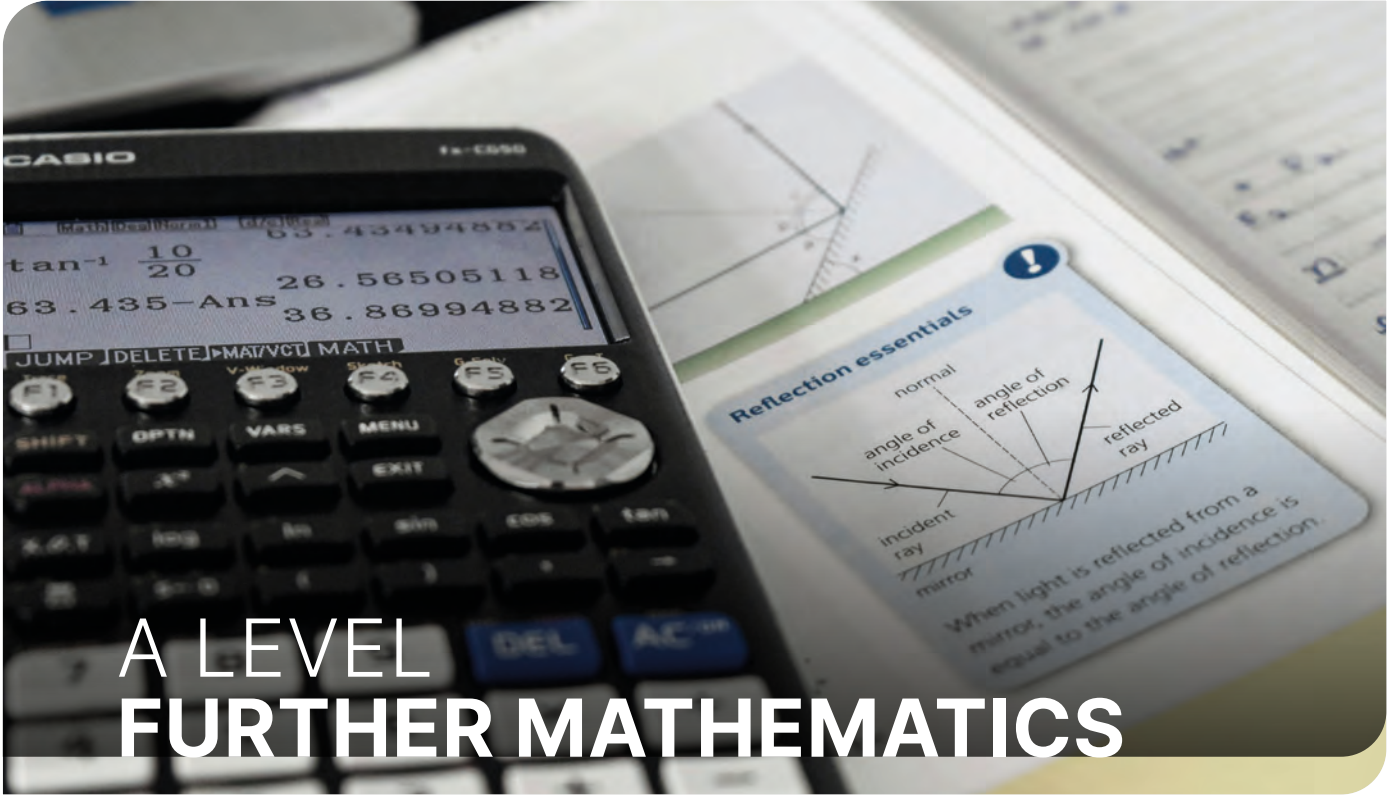
BOARD: PEARSON

The A-Level Mathematics course is designed for students with a strong interest in mathematics who wish to deepen their understanding and develop essential problem-solving and logical reasoning skills. Mathematics is one of the most popular A-Level subjects and is highly regarded by universities and employers for a wide range of degrees and careers.

The two-year course is the Pearson Edexcel Level 3 Advanced GCE in Mathematics (9MA0), it consists of 50% pure mathematics, 25% mechanics, and 25% statistics. In the first year, students focus on pure mathematics topics such as coordinate geometry, differential and integral calculus, vectors, trigonometry, and exponential and logarithmic functions.

Alongside this, they study applied mathematics covering statistics and mechanics, which introduce practical applications of mathematical concepts. In the second year, students build on this foundation by exploring more advanced pure mathematics areas, including functions, further calculus, parametric equations and sequences and series. The applied mathematics component advances their understanding of statistics and mechanics, with further study in both areas. Throughout the course, students will develop analytical thinking, rigorous problem-solving skills, and the ability to apply mathematical techniques to real-world scenarios.

A-level Maths prepares learners for higher education and careers in STEM and other fields where strong quantitative skills are essential.



A LEVEL FURTHER MATHEMATICS

BOARD: PEARSON

A-Level Further Mathematics is a challenging and highly rewarding course designed for students who have a strong passion for mathematics and have achieved excellent GCSE results. This course is particularly suitable for students planning to pursue mathematics-related degrees or careers requiring advanced mathematical understanding, such as engineering, physics, economics, and computer science.

The two-year Pearson Edexcel Level 3 Advanced GCE Further Mathematics (9FM0) course combines 50% compulsory pure mathematics with 50% applied mathematics. In the first year, students study topics including complex numbers, proof, matrices, further calculus, vectors and algebra. The second year builds on this foundation with more advanced content such as polar coordinates, hyperbolic functions, and differential equations. Students also have the option to sit the AS exam at the end of the first year.



This rigorous course develops strong analytical and problem-solving skills, preparing learners for higher education and competitive careers in STEM fields and beyond. Further Mathematics is highly regarded by universities and employers alike, offering a significant advantage to students pursuing academic and professional pathways involving complex mathematical applications.



SPECIFICATION: OCR

Music A Level offers a rewarding mix of creativity, performance and academic exploration. Whether you're aiming for a career in music or simply want to keep your passion alive alongside other subjects, this course gives you space to develop as a well-rounded, thoughtful musician. The course is built around three areas: performing, composing, and listening and appraising. You'll record two performances (totalling at least six minutes), write two original compositions, and sit a final listening and appraising exam. The listening component includes detailed study of a wide range of music — from Haydn's London Symphony to *Messiaen's Quartet for the End of Time — encouraging you to engage with music from different times, places and

perspectives. You'll need to be working at around Grade 6 standard on your instrument or voice by the start of the course. If you've got a good grasp of music theory and a genuine interest in how music works, you'll find plenty to get stuck into. Music pairs particularly well with subjects like Maths, Physics, and other Sciences thanks to its pattern-based structure and abstract reasoning. A Level Music also complements subjects like English or History, especially when it comes to essay writing and interpretation. Some students go on to music degrees, while others move into fields like teaching, sound design, medicine or engineering.

Whatever your plans, Music A Level develops valuable skills: focus, creativity, independence — and the ability to listen with real attention.





NATIONAL EXTENDED CERTIFICATE IN **ACTING**

BOARD: BTEC LEVEL 3

Overview

Our BTEC Level 3 National Extended Certificate in Performing Arts (Acting) is a practical, vocational qualification designed for students with a passion for drama and performance. This course focuses on hands-on, performance-based learning, with no final exam, allowing you to develop your acting skills through workshops, rehearsals, and live performances. You will explore techniques in improvisation, characterisation, script work, and professional performance.

What You Will Study

- Acting techniques and performance skills
- Theatre and screen production analysis

- Devising and staging original performances
- Understanding professional acting practices

Why Choose This Course

- Practical, coursework-based learning with no final exam
- Gain real performance experience through school productions and workshops
- Develop transferable skills including communication, teamwork, and confidence

Progression

The Extended Certificate is equivalent to 1 A-level. This qualification cannot be taken in conjunction with the BTEC Dance qualification.



NATIONAL EXTENDED CERTIFICATE IN **DANCE**

BOARD: BTEC LEVEL 3

Overview

The BTEC Level 3 National Extended Certificate in Performing Arts (Dance) is a practical, performance-based qualification for students passionate about movement and choreography. The course is entirely coursework-based with no final exam, focusing on developing your dance skills through rehearsals, performances, and creative projects. You will explore a variety of dance styles, develop technical ability, and perform in both solo and ensemble pieces.

What You Will Study

- Contemporary, commercial, and classical dance techniques
- Choreography and dance composition
- Performance workshops and productions
- Professional dance practice and career preparation

Why Choose This Course

- Practical and hands-on learning with no final exam
- Perform in school productions, festivals, and community events
- Develop creativity, discipline, and confidence through performance

Progression

The Extended Certificate is equivalent to 1 A-level. This qualification cannot be taken in conjunction with the BTEC Acting qualification.



A LEVEL PHOTOGRAPHY

BOARD: AQA

Studying Photography at A-Level offers students a dynamic and inspiring introduction to both traditional and digital photographic techniques. The course encourages personal creativity and visual storytelling, allowing students to develop their own style while exploring themes, concepts, and contemporary issues. Through practical work, critical analysis, and research into the work of photographers and artists, students gain a deeper understanding of visual culture and image-making. Students will have the opportunity and freedoms to explore their own style and to develop independence in the field which will prepare them for potential future study and careers in the creative industry. This course provides an excellent pathway to further study in creative subjects and opens the door to a range of careers in the visual arts, media, and design industries.




A LEVEL PHYSICAL EDUCATION

BOARD: OCR

A Level Physical Education is an exciting and challenging course for students who are passionate about sport, exercise, and performance. You'll study how the body and mind work in physical activity, how we learn and develop sporting skills, and how factors like culture, media, and technology influence sport in today's society.

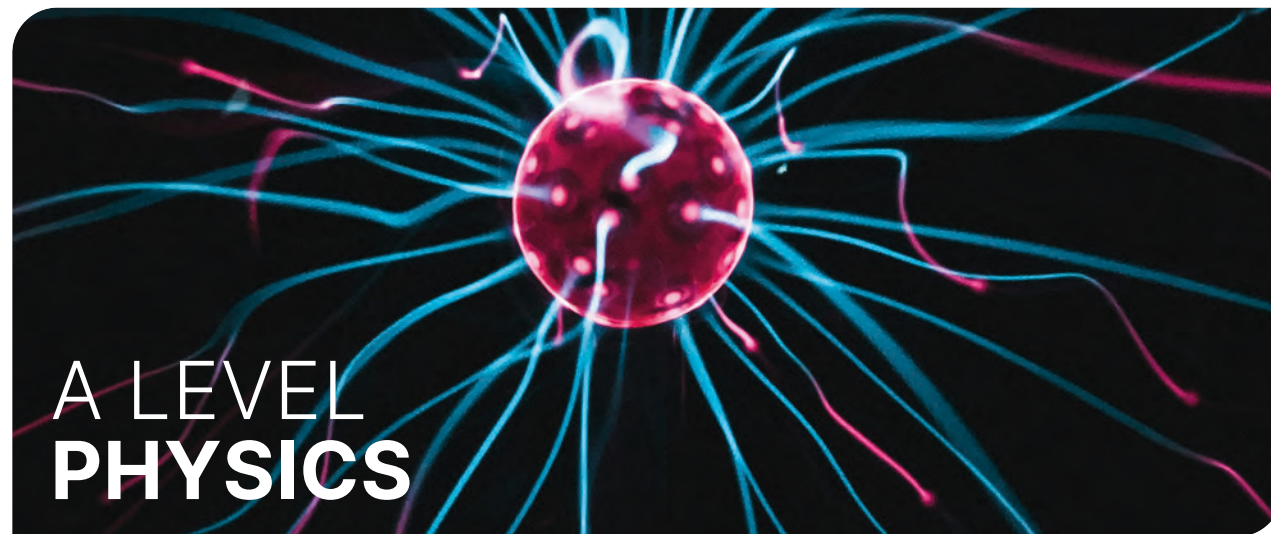
The course covers a wide range of topics including:

- Anatomy and physiology
- Exercise physiology and biomechanics
- Skill acquisition and sports psychology
- The role of sport in society and contemporary issues

You'll also be assessed in one practical sport, either as a performer or a coach, and complete an in-depth Evaluation and Analysis of Performance for Improvement (EAPI).



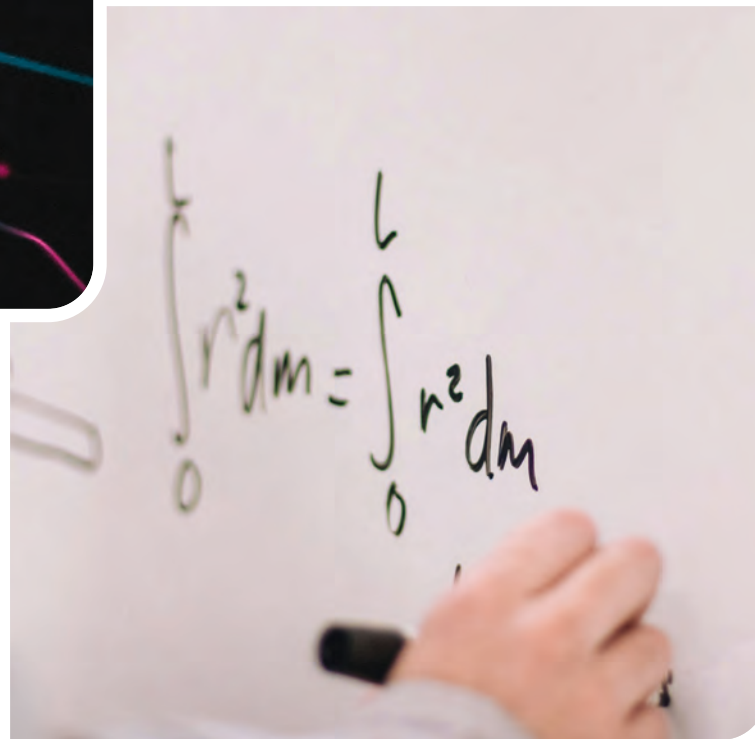
Lessons are active, engaging, and full of real-life sporting examples. You'll set targets, take part in regular discussions, and benefit from workshops and practical experiences outside the classroom. A-level PE will help you develop confidence, independence, and prepare you for further study or careers in sport, health, fitness, or teaching.

**BOARD: OCR**

Physics is the foundational science that underpins our understanding of how the universe operates, from the smallest particles to the largest cosmic structures, and sits at the heart of technological advancement. Studying A-Level Physics cultivates highly valued skills such as the ability to grasp complex concepts quickly, a determination to find coherent answers, and strong problem-solving, analytical, mathematical, and IT skills. Throughout the course, you will develop a deep knowledge and understanding of scientific ideas, processes, techniques, and procedures. You will apply this knowledge extensively in both theoretical and practical contexts, becoming adept at handling qualitative and quantitative data. A key aspect of your learning will involve analysing, interpreting, and

evaluating scientific information, ideas, and evidence to make robust judgements and reach well-founded conclusions. Furthermore, you will refine practical design and experimental procedures, building essential laboratory skills.

A Level Physics is 100% externally assessed, with no coursework or controlled assessments, meaning all practical skills are developed in preparation for the written examinations. A significant pre-requisite for this course is strong mathematical skills, as 40% of the marks available in the written examinations will be dedicated to the assessment of mathematical proficiency. This rigorous and intellectually stimulating qualification is highly regarded by universities and employers, preparing you for a



vast array of careers in engineering, scientific research, technology development, and any field requiring a highly analytical and logical approach to complex problems.

**BOARD: AQA**

A Level Politics is a dynamic and intellectually engaging course that explores the systems, ideas, and institutions that shape our lives. It is perfect for students who want to understand how decisions are made, who holds power, and how individuals and movements can bring about political change — both in the UK and abroad.

The course begins with a detailed study of the UK political system, covering the Constitution, Parliament, the Prime Minister and Cabinet, elections, political parties, and pressure groups. Students critically assess the strengths and weaknesses of British democracy and develop a clear understanding of political participation and accountability. Alongside this, students explore major political

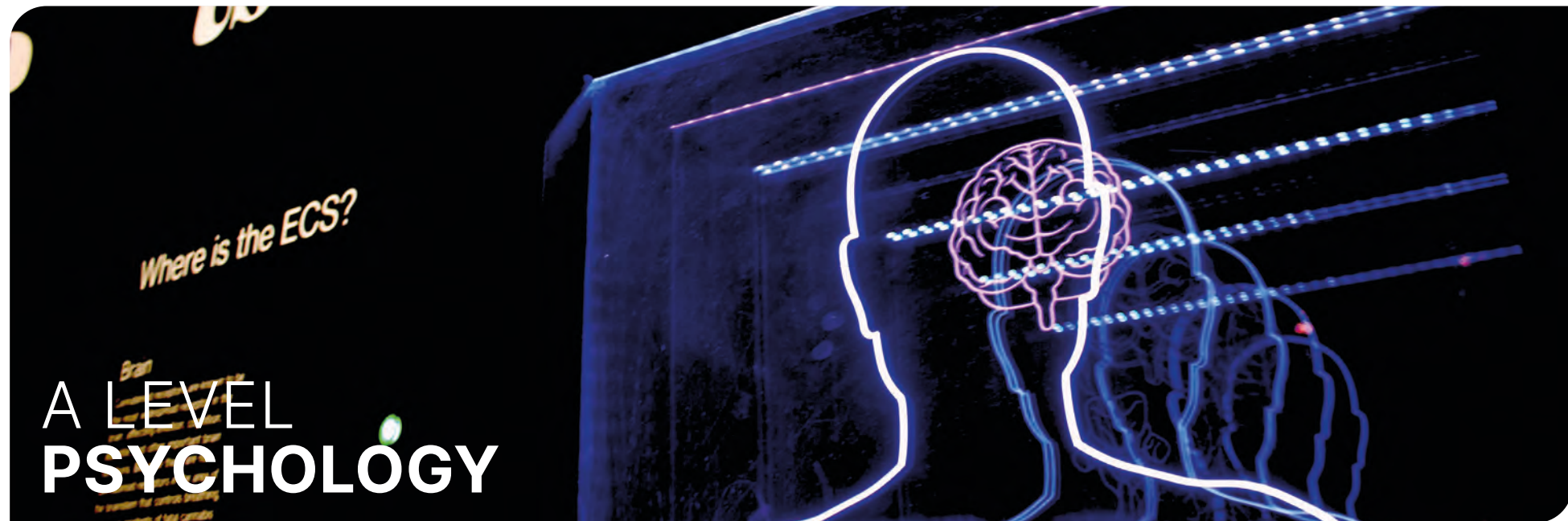
ideologies including liberalism, conservatism, and socialism, with the option to study an additional ideology such as feminism or nationalism. This helps students understand the values and principles that drive political thought and action.

In the second year, students conduct a comparative study of UK and US politics, examining key institutions such as the US Constitution, Congress, the Presidency, and the Supreme Court. Students explore civil rights, federalism, and checks and balances — gaining insight into how two major democracies operate and differ.

Politics is an excellent A Level choice, complementing subjects like History, Sociology, Economics, Philosophy, English, and Law.



It develops critical thinking, debate, research, and communication skills — all of which are highly valued in fields such as law, journalism, public service, international relations, and business. Above all, A Level Politics empowers students to become informed, articulate, and active citizens. Whether you're passionate about current affairs or simply want to better understand the world around you, this course offers the tools to think independently and engage meaningfully with political life.



BOARD: AQA

Want to learn about the human mind? You've come to the right place! Psychology is the study of people, the mind and behaviour. Why do people react to certain things in different ways? Are we all capable of murder? What can make people happy or sad, and how can we use that in the modern world? Psychology offers students a fascinating insight into human behaviour, thought processes, and mental health. It's an engaging and thought-provoking subject that helps learners understand themselves and others — making it one of the most popular A-Level choices nationwide.

Students explore a wide range of topics which may include, Memory, Attachment, Social influence, Psychopathology, Schizophrenia, Forensic psychology and Relationships alongside research methods. Students will also apply their learning to real life scenarios. The course encourages critical thinking, analytical skills, and scientific enquiry, giving students the tools to question evidence, evaluate studies and consider ethical implications - all of which are valuable across a variety of academic and career pathways. Students are assessed at the end of year 13 by three, two-hour exams.

Through their study of Psychology, students will also develop transferable skills such as communication, data analysis, essay writing, and independent research. These are highly

regarded by universities and employers in fields such as healthcare, education, marketing, law, and social work.

Whether students are considering a career in psychology or simply want to explore a subject that helps explain the world around them, Psychology is an excellent choice. It not only builds academic confidence but also fosters a deeper understanding of people — an invaluable skill in any walk of life.



BOARD: AQA, EXPLORING CHRISTIANITY, ISLAM, PHILOSOPHY & ETHICS

The A Level Religious Studies course develops highly transferable skills in critical analysis, evaluative reasoning, and persuasive writing. These are valued not only in academic settings but also in a wide range of professional careers.

At A Level, students explore three key components:

- Philosophy of Religion
- Ethics
- Study of Religion: Christianity and Islam

There is no requirement for students to have taken Religious Studies at GCSE. The course is fully accessible to anyone with a keen interest in religion, big questions, and how belief

systems shape our world. Throughout the course, students explore a range of challenging and thought-provoking questions, such as:

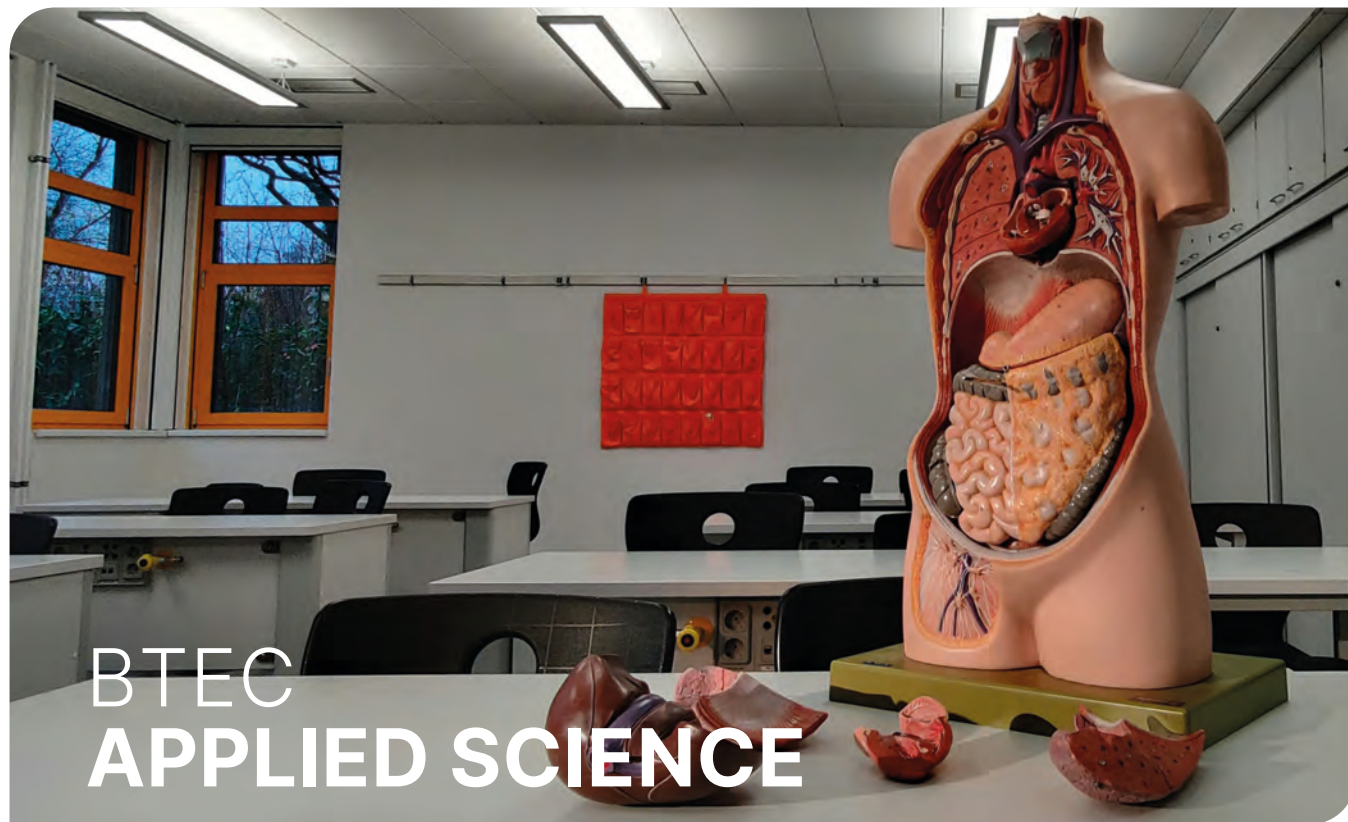
- Does God exist?
- What is evil, and can it be justified?
- Can we prove anything through reason alone?
- What does it mean to live ethically?
- Are religious experiences real?
- Is there life after death?
- How do different faiths understand God, morality, gender roles, and authority?



In studying Christianity and Islam, students explore both traditional doctrines and how these are understood in the modern world. Topics include:

- The nature of God in both faiths
- Life after death and religious authority
- Gender and sexuality in religious contexts
- Science and religion
- Religious pluralism and interfaith dialogue

Graduates in Theology, Philosophy, and Religious Studies are shown to be highly employable, due to their ability to reason critically, write persuasively, and think ethically. Many pursue careers in Law, Journalism, Marketing and Business, Teaching and Academia. Public Policy and Civil Service.



BTEC APPLIED SCIENCE

BOARD: PEARSON

The BTEC Applied Science Extended Certificate offers a dynamic and practical alternative to a traditional A-level science qualification. Equivalent in size to one A-level, this course provides a broad foundation in Biology, Chemistry, and Physics, preparing you for a range of further education or career pathways.

You will complete four distinct units, blending both theoretical knowledge and hands-on application. Unit 1 focuses on the fundamental

principles and applications of Science through an externally assessed exam, while Unit 2 is an internally assessed unit on practical scientific procedures and techniques. The course also includes an externally marked practical task in Unit 3, Scientific Investigation Skills, and an internally assessed unit on the physiology of human body systems (Unit 8).

Beyond the scientific content, this BTEC qualification is designed to cultivate essential professional and cognitive skills. You will develop a mature and well-organised approach



to managing ongoing deadlines, and enhance critical thinking and problem-solving abilities. The course also fosters crucial communication and collaborative skills, preparing you to present ideas and work effectively with others. This adaptable and comprehensive approach to learning equips you with the resilience and self-management needed for continued personal and professional development.

Whether you are interested in degree programmes in Biomedical Science, Biochemistry, or Sports Science, this qualification provides the necessary academic grounding. Alternatively, you will be well-prepared for the workforce, with the skills needed to thrive in roles with local or national science and engineering employers.



A LEVEL SOCIOLOGY

BOARD: AQA

Sociology is an exciting and relevant subject that helps students make sense of the world around them. It explores how society works, why people behave the way they do, and how issues like inequality, identity, crime, and education affect our everyday lives. Sociology is a subject that not only develops academic skills but also encourages a deeper understanding of the world we live in. Sociology is about asking questions — why do some groups achieve more in education than others? What causes crime? How do the media influence our views? Studying Sociology helps students think critically, consider different perspectives, and support arguments with evidence. These skills are valuable not just for exams, but for life beyond school too.



Students will study a variety of topics including Families and Households, Education, Crime and Deviance, and Sociological Theory and Methods. It suits students who are curious, enjoy discussion, and want to understand social issues and current events. Students will be assessed by three, two-hour exams at the end of year 13.

Sociology supports a wide range of university courses and careers, including criminology, law, journalism, social work, politics, education, and psychology. It teaches transferable skills like essay writing, analysis, and independent thinking — all of which are valued by employers and universities alike. Whether your future lies in understanding people, shaping policy, or simply questioning the status quo, Sociology is a subject that opens minds and doors.



BOARD: **AQA**

A Level Spanish offers far more than just grammar and vocabulary – it is a chance to truly connect with the people, politics and culture of the Spanish-speaking world. From the rhythms of Latin American life to the traditions and transformations of modern Spain, this course will broaden your worldview and sharpen your voice.

You will explore a variety of contemporary themes such as the role of technology in society, changing family structures, cultural heritage, youth issues, and the impact of immigration. Through film and literature, you'll engage with powerful stories that reveal the richness and diversity of Hispanic cultures.



Discussion and debate are central to the course. You will learn to express your views clearly and persuasively, both in writing and speech. You'll also carry out an Independent Research Project, where you'll investigate a topic that inspires you – from Spanish cinema to Latin American politics.

Whether you are drawn to travel, culture, international careers, or just enjoy thinking differently, Spanish at A Level will challenge you to become a more confident communicator and critical thinker. It's a subject that opens doors – to other cultures, other perspectives, and a world of new opportunities.

Spanish is spoken across 20 countries – it's not just a subject: it's a global advantage.

APPLICATIONS

Applications will open in September and each applicant will receive personalised guidance on their choices so that we can ensure we are supporting each individual with the best curriculum offer to suit their needs

GENERAL ENTRANCE CRITERIA*

Five or more GCSEs (or equivalent) with grades 9-4 including English and Maths.

Individual subject entrance criteria

Subject	Specific Entrance Criteria required (if blank, Sixth Form general entrance criteria apply)
Acting	Aptitude to be determined at individual student interview
Fine Art	A minimum of grade 6 in a GCSE creative subject, or by portfolio submission if GCSE creative subject not taken
Business	A minimum of grade 6 in GCSE English and/or GCSE Business Studies
Biology	A minimum of grade 6 in GCSE Biology or minimum 7-6 in GCSE Combined Science
Chemistry	A minimum of grade 6 in GCSE Chemistry or minimum 7-6 in GCSE Combined Science
Computer Science	A minimum of grade 6 in GCSE computer science, and/or a minimum grade 6 in GCSE Mathematics

Subject	Specific Entrance Criteria required (if blank, Sixth Form general entrance criteria apply)
Dance	Aptitude to be determined at individual student interview
English Literature	A minimum of grade 6 in GCSE English Literature
English Language and Literature	A minimum of grade 6 in at least one GCSE English qualification
Food science and nutrition	A minimum of grade 6 in GCSE Food and nutrition or if not taken at GCSE, a minimum of grade 5 in Biology or 6-5 in GCSE Combined Science.
French	A minimum of grade 6 in GCSE French
Geography	A minimum of grade 6 in GCSE Geography
German	A minimum of grade 6 GCSE German
History	A minimum of grade 6 in GCSE History or English Literature if GCSE History not taken
Law	A minimum of grade 5 in English
Mathematics	A minimum of grade 7 in GCSE Mathematics (students who achieve a grade 6 may be given a discretionary trial opportunity)
Further Mathematics	A minimum of grade 7 in GCSE Mathematics

Subject	Specific Entrance Criteria required (if blank, Sixth Form general entrance criteria apply)
Music	A minimum of grade 6 in GCSE Music, or based on individual ability to be determined at student interview
Photography	Aptitude to be determined at individual student interview through portfolio in related creative subjects
Physical Education	A minimum of grade 6 in GCSE Sport or a minimum of 6 in Biology or Combined Science
Physics	Minimum of grade 6 in GCSE Physics or minimum 7-6 in GCSE Combined Science
Politics	A minimum of grade 6 in GCSE English
Psychology	A minimum of grade 6-6-5 across English, Science and Mathematics in any combination
Religious Studies	A minimum of grade 6 in English
Applied Science	A minimum of grade 5 in Biology, Chemistry and Physics or a minimum of 6-5 in Combined Science
Sociology	A minimum of grade 5 in GCSE English
Spanish	A minimum of grade 6 in GCSE Spanish

* All courses will be subject to confirmation following the application process and each applicant’s circumstances will be considered on individual merit where appropriate.



WE LOOK FORWARD TO
WELCOMING YOU SOON!



HOULTON
SCHOOL

Houlton School
Signal Drive, Houlton, Rugby, Warwickshire, CV23 1ED

Telephone: 01788 593 300
Email: hello@houlton.tlet.org.uk
www.houltonschool.org.uk

 @HoultonSchool |  @HoultonSchool |  @houltonschool

 Proud to be part of the
Transforming Lives
EDUCATIONAL TRUST